

0.56 Weense dansen

Gecomponeerd in 1819 in Mödling

WoO 17
Ludwig van Beethoven

Walzer

(Ruhig)

Musical score for the Walzer section, Contrabass part. The score is in 3/4 time and B-flat major. It consists of four staves of music. The first staff starts with a dynamic of *p* and ends with *mf*. The second staff starts with *mf*, has a crescendo leading to *p*, then a *cresc.* leading to *f*. The third staff starts with *p*, has a *pizz.* section starting with *p*, and ends with *p*. The fourth staff starts with *fp*, has an *arco* section starting with *fp*, and ends with *p*. The section concludes with the instruction "D.C. al Fine".

Menuett

(Mit Hingebung)

Musical score for the Menuett section, Contrabass part. The score is in 3/4 time and B-flat major. It consists of four staves of music. The first staff starts with a dynamic of *fp* and ends with *f*. The second staff starts with *f* and has two first and second endings. The third staff starts with *p*, has a *f* section, and then a TRIO section starting with *p*, followed by *mf* and *f*. The fourth staff starts with *fp*, has a *fp* section, and ends with *mf* and *p*.

29 Menuetto da capo

p *f* *f* *f* *p*

Menuett

(Schwungvoll)

p *fp* *fp* *fp* *p* *fp* *p*

8

mf *p* *p* *p* *p* *p* *f*

15 TRIO

p *mf* *p* *p* *p* *p* *p*

22

p *p* *p* *p* *p* *sf*

28 Menuetto da capo

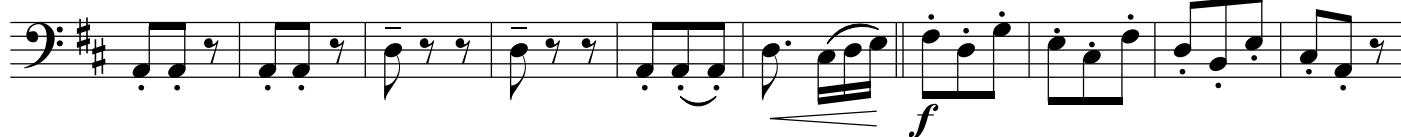
p *p* *f* *p* *p* *p*

Walzer

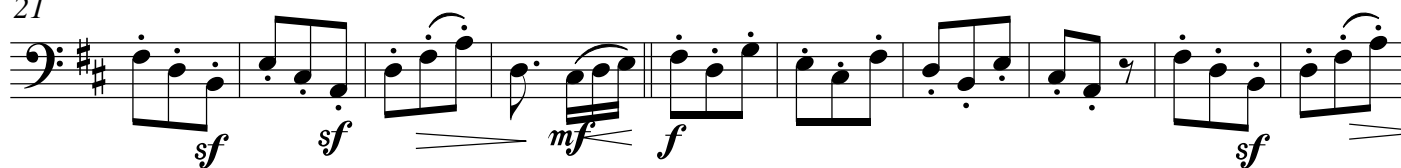
(Ruhig)



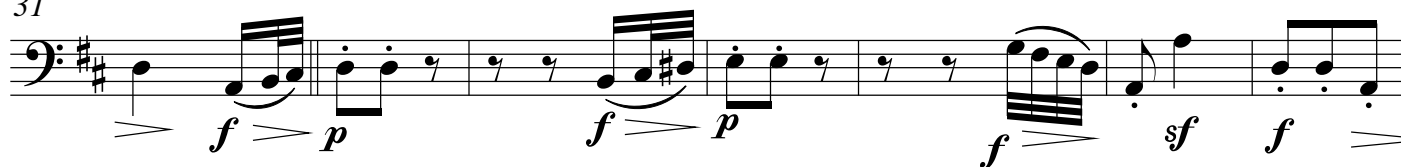
11



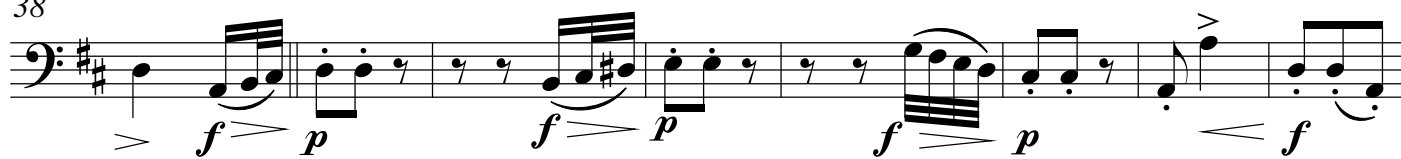
21



31



38



46



55

